



Film extrusion lines - Blown film - IFLEX 406

## 1. Description of the Machine and Accessories

Manufacturer: DOLCI

Model:

Year: 2003

Number of layers: 3

Film structure: ABC

Material: LDPE, LLDPE, EVA in blends PP and HDPE

Film Width: 1800

Output (Kg/h): 300

Extruder 1 Layer ref: : A

Screw diam: 55mm

Description: Gravimetric dosing unit Doteco 3 components, 45kw AC motor, L/D30

Extruder 2 Layer ref: : B

Screw diam: 65mm

Description: Gravimetric dosing unit Doteco 3 components, 73kw AC motor

Extruder 3 Layer ref: : C

Screw diam: 55mm

Description: Gravimetric dosing unit Doteco3 components, 45kw AC motor, L/D30

Head description: IBC with contact less sensor; Head Model: 3CX25-35;

Die diam (mm): 350

Thickness controll system: PLAST CONTROL

Bubble cage: Mothorized Make Reinhold

Panel for gussets: yes

Take off unit: Rotating Model PSDO1800

Corona treatment: Make Cason model Electronplast 3000/s

Web guide: yes

Rewinder Type: Double

Rewinder max reel diameter: 1000

Rewinder description: model sxo1800

Additional informations: chiller

speed 80m(min)

## 2. Sales price

Price: EURO 240000

### 3. Terms of delivery

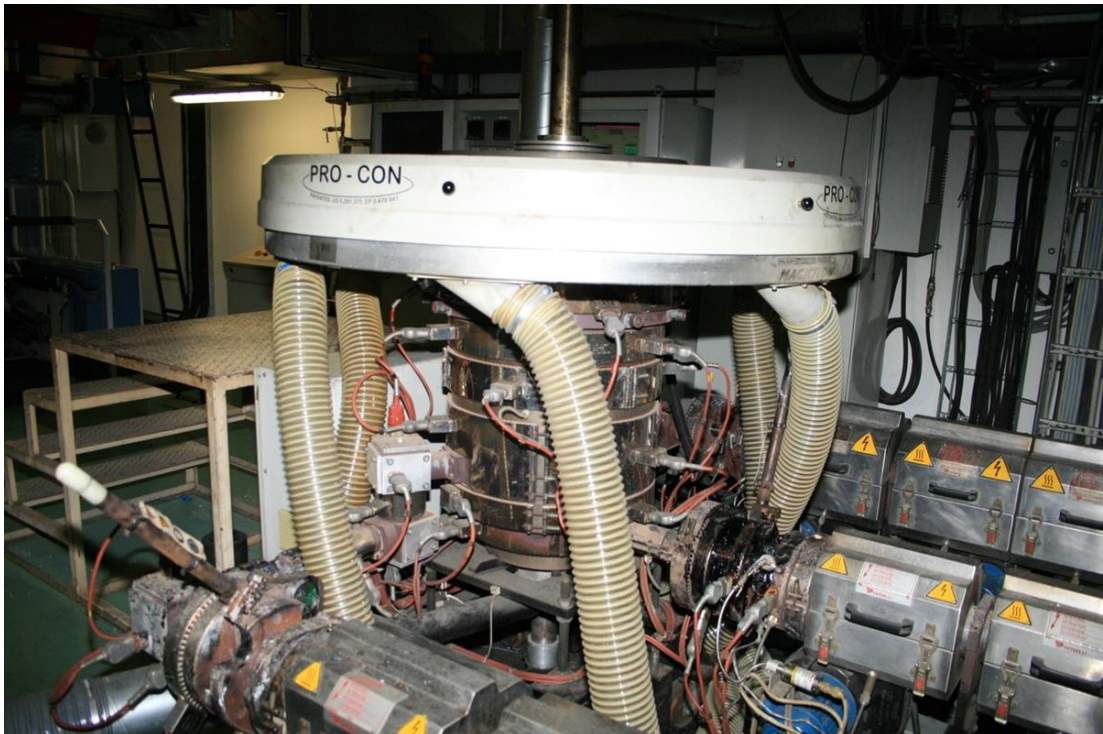
Exworks Incoterms 2000

### 4. Validity

Machine is subject to prior sale

### 5. Additional notes

6.Photos





If you are interested in additional informations please contact us

INTERNAVIA SOLUTIONS LLC  
1480 SANDPIPER CIRCLE  
WESTON 33327 FLORIDA USA  
Tel: +1 954 261 8338  
E - mail : [interflexsas@gmail.com](mailto:interflexsas@gmail.com)  
Skype: eenflorida